



ATTENTION SUMMERFIELD RESIDENTS

NOTICE OF INFORMATIONAL MEETING AND PUBLIC HEARINGS

The Town of Summerfield has received an application to rezone property within its limits. The request is to:

rezone ±3.69 acres located at 7968 Winfree Rd, from the Agricultural (AG) District to the Residential District (RS); the property is located in the Town of Summerfield, Bruce Township, Guilford County parcel 147293.

Summerfield's process to rezone property typically involves three meetings: a Public Information Meeting and Public Hearings at both the Planning Board and Council levels. The Planning Board makes a rezoning *recommendation* to Council and then Council makes the final rezoning *decision*. You may attend any or all meetings to convey your questions, comments, or concerns.

To learn more about the request in an informal setting, please attend the Informational Meeting scheduled for Tuesday, February 20, 2024, 5:30pm at Summerfield Town Hall (4117 Oak Ridge Road). Alternatively, visit the Town's website (<https://www.summerfieldnc.gov/cases>) to find additional information on upcoming cases.

If you wish to speak in a formal setting to express whether you are in favor, against, or neutral about the request, please attend one or both Public Hearings:

1. Planning Board Public Hearing: Monday, February 26, 2024, 6:30pm, Summerfield Community Center (5404 Centerfield Road).
2. Council Public Hearing: Tuesday, March 12, 2024, 6:30pm, Summerfield Community Center (5404 Centerfield Road).

All property owners within one-quarter (0.25) mile of a property proposed for rezoning are receiving this notification. The Town relies on Guilford County tax records for addresses. Please share this information with those you feel might be interested in the rezoning request.

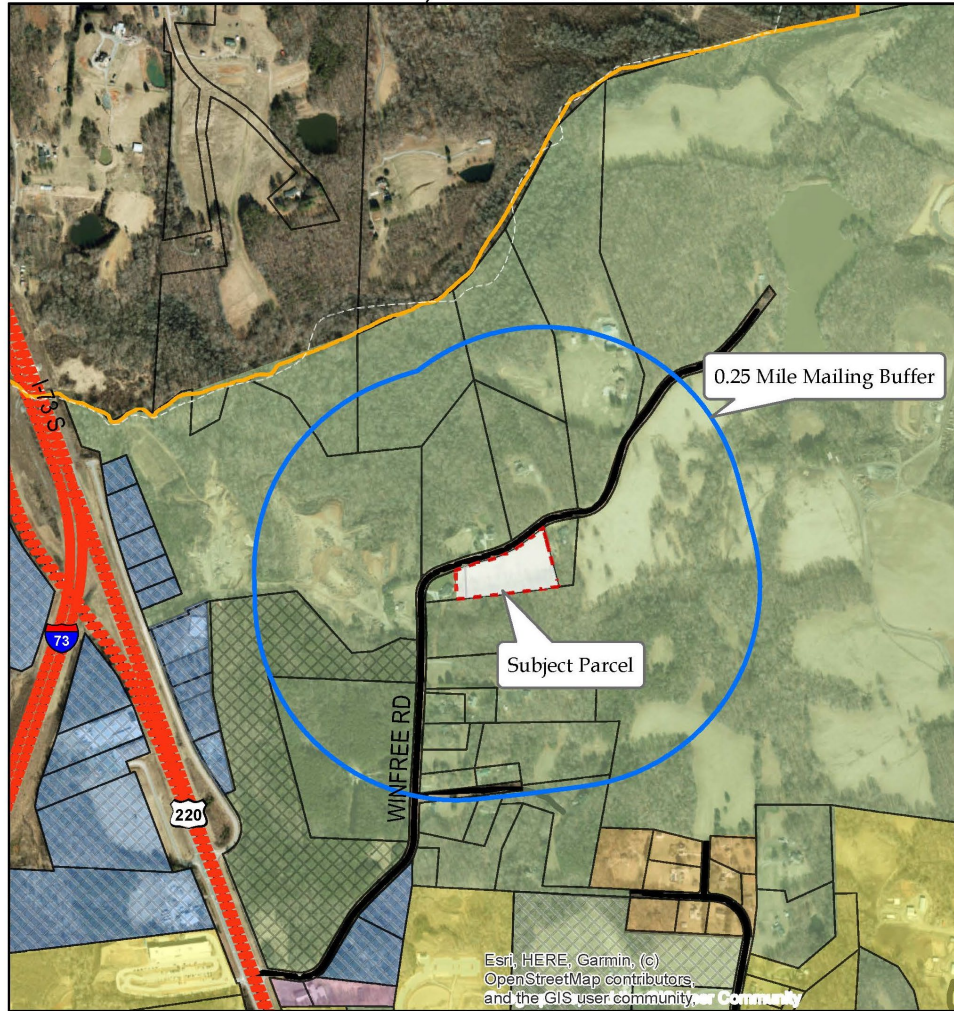
Please contact the Planning Department at Summerfield Town Hall (336-643-8655 or 336-643-8681) for additional information.



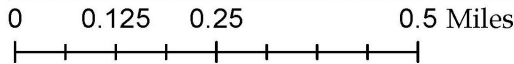
Town Hall: POB 970, 4117 Oak Ridge Road, Summerfield, NC 27358

ph: 336-643-8655 / www.summerfieldnc.gov

Location Map RZ-03-2024; 7968 Winfree Rd



Esri, HERE, Garmin, (c)
OpenStreetMap contributors,
and the GIS user community



Produced by the Town of Summerfield Planning Department
using Guilford County GIS Data
Map updated 1/25/2024

Summerfield Zoning	
	0.25 Mailing Buffer
	Subject Parcel
	Current Summerfield Town Limits
	Conditional Zoning
	AG - Agricultural
	IND - Industrial
	OI - Office/Institutional
	RS - Residential
	RS - 30-Residential

